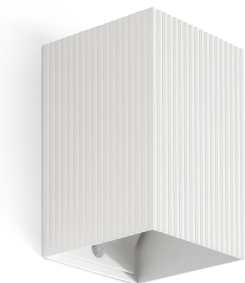


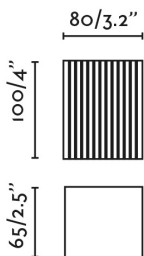
IP20



Mounting	Wall
Voltage (V)	100V-240V
Hertz	50/60Hz
Class	I
IP	20
Power (W)	8
Light source	GU10 LED
Light source included	No
Number of lamp holders	1
Light orientation	Indirect lighting
Structure material	Aluminium + Steel
Structure finish	White+White
RAL/Pantone structure	RAL9003



Installation instructions



Recommended bulbs



GU10 LED	
Reference	17316
Voltage (V)	220V-240V
Hertz	50/60Hz
Power (W)	7
Luminous Flux (lm)	632
Color temperature (K)	2700K



GU10 LED	
Reference	97685327
Voltage (V)	220V-240V
Hertz	50/60Hz